

SKF Extremely high viscosity bearing grease with solid lubricants

LGEV 2

SKF LGEV 2 is a mineral oil based grease, using a lithium-calcium soap. Its high content of molybdenum disulphide and graphite, in conjunction with an extremely high viscosity oil, provide outstanding protection under the harshest conditions involving high loads, slow rotations and severe vibrations.

- Extremely suitable for lubricating large sized spherical roller bearings subject to high loads and slow rotations, a situation where microslip is likely to occur
- Extremely mechanically stable providing good water resistance and corrosion protection

Typical applications

- Trunnion bearings on rotating drums
- Support and thrust rollers on rotary kilns and dryers
- Bucket wheel excavators
- Slewing ring bearings
- High pressure roller mills
- Crushers



Available pack sizes

Packsize	Designation
35 g tube	LGEV 2/0.035
420 ml cartridge	LGEV 2/0.4
5 kg can	LGEV 2/5
18 kg pail	LGEV 2/18
50 kg drum	LGEV 2/50
180 kg drum	LGEV 2/180
Electro-mechanical lubricant dispensers	
TLMR 101 series 380 ml refill (incl. battery)	LGEV2/MR380B
TLMR 201 series 380 ml refill	LGEV 2/MR380



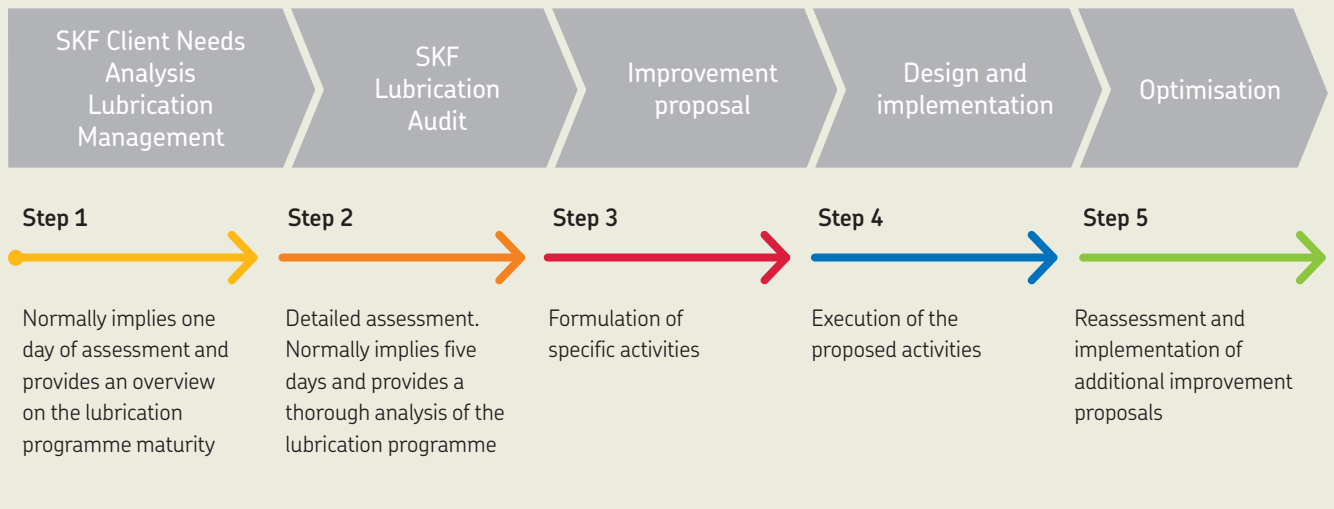
Technical data

Designation	LGEV 2/(pack size)		
DIN 51825 code	KPF2K-10	Mechanical stability	
NLGI consistency class	2	Roll stability, 72 hrs at 100 °C, 10 ⁻¹ mm V2F test	+50 max. 'M'
Thickener	Lithium/calcium	Corrosion protection	
Colour	Black	Emcor: – standard ISO 11007	0–0
Base oil type	Mineral	– water washout test	0–0 ¹⁾
Operating temperature range	–10 to +120 °C (15 to 250 °F)	– salt water test (100% seawater)	0–0 ¹⁾
Dropping point DIN ISO 2176	>180 °C (>355 °F)	Water resistance	
Base oil viscosity		DIN 51 807/1, 3 hrs at 90 °C	1 max.
40 °C, mm ² /s	1 020	Oil separation	
100 °C, mm ² /s	58	DIN 51 817, 7 days at 40 °C, static, %	1–5
Penetration DIN ISO 2137		Copper corrosion	
60 strokes, 10 ⁻¹ mm	265–295	DIN 51 811	1 max. at 100 °C (210 °F)
100 000 strokes, 10 ⁻¹ mm	325 max.	EP performance	
		Wear scar DIN 51350/5, 1 400 N, mm 4–ball test, welding load DIN 51350/4	1,2 max. 3 000 min.

¹⁾Typical value

Lubrication management

Just as asset management takes maintenance to a higher level, a lubrication management approach allows lubrication to be seen from a wider point of view. This approach helps to effectively increase machine reliability at a lower overall cost.



skf.com | mapro.skf.com | skf.com/lubrication

© SKF is a registered trademark of the SKF Group.

© SKF Group 2017

The contents of this publication are the copyright of the publisher and may not be reproduced (even extracts) unless prior written permission is granted. Every care has been taken to ensure the accuracy of the information contained in this publication but no liability can be accepted for any loss or damage whether direct, indirect or consequential arising out of the use of the information contained herein.

PUB MP/P8 12047/2 EN · June 2017

Certain image(s) used under license from Shutterstock.com.